

PondXpert Filtobox

- 1) How to Set up your PondXpert Filtobox*
- 2) How to change the foams and UV bulb*



Filtobox Set Up

The Filtobox is near enough set up within the box; making this one of the easiest box filters to set up.

When the filter is removed from the box it will look as the picture to the right.

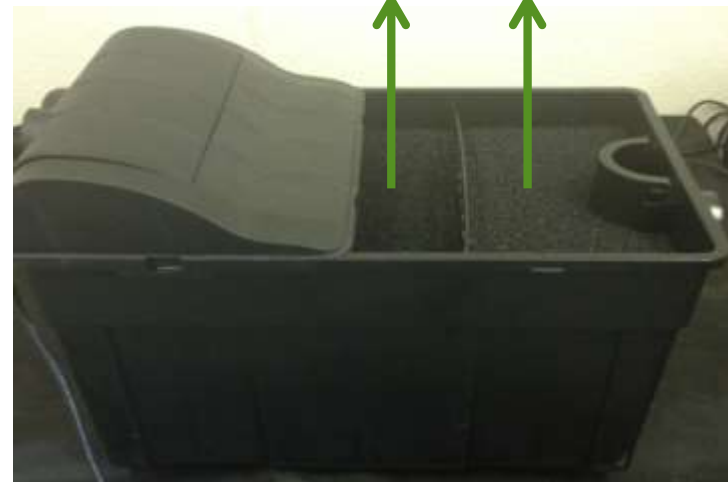


How to access the filter foams

The flat front section of the lid is held in place by six strong clips.

In order to remove this section the clips need to firstly be pushed in to the main base, this will then allow the lid to be removed upwards.

Once the base lid has been removed you are able to access the foams which can simply be lifted out, as shown.



Filtobox Bio-media

Once the foams are removed from the main body of the unit you will notice a layer of black plastic shapes. This is the bio-media; it enables water stimulation over a larger surface area.

The stimulation of water is key in creating an ideal environment for "good" bacteria growth; this is required to ensure maintenance of the ponds eco-balance.

When the filter is cleaned manually the bio-media does not need to be changed or cleaned too thoroughly, as this will remove the "good" bacteria.

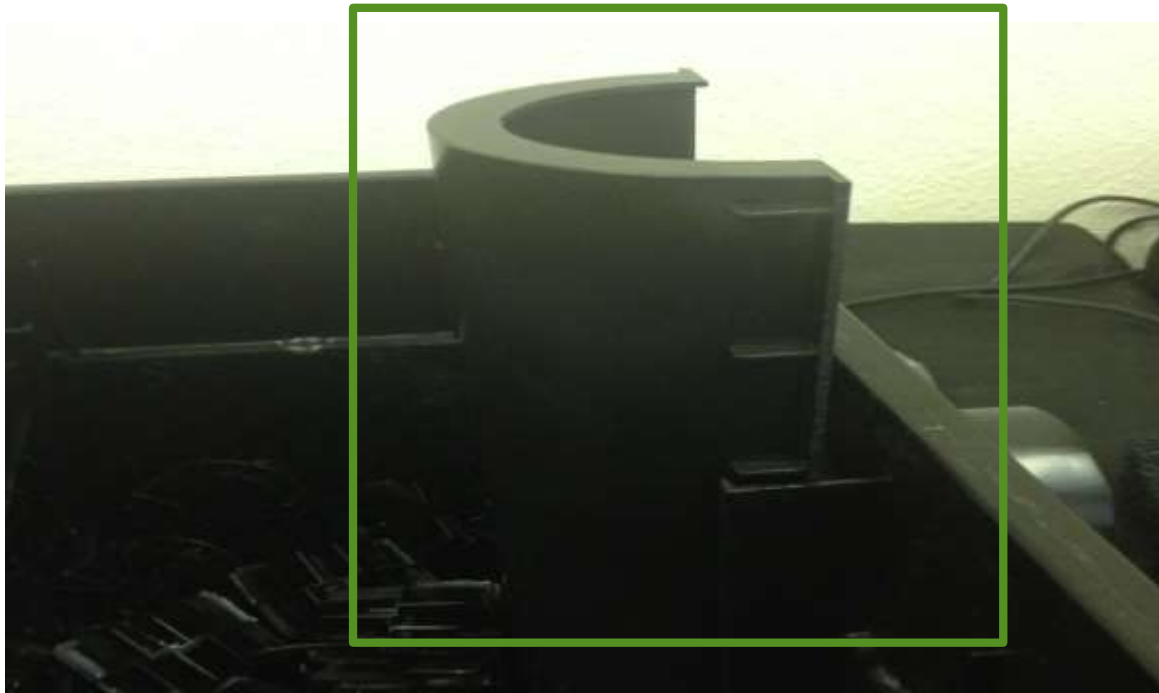


Filtobox Bio media section

Within the main unit there is a half cylinder shaped tube, as highlighted below.

This enables the water that has passed over the bio-media to be directed away from the unit and back in to the pond without disturbing the bio-media further.

It is essential that this part is not removed at any time.

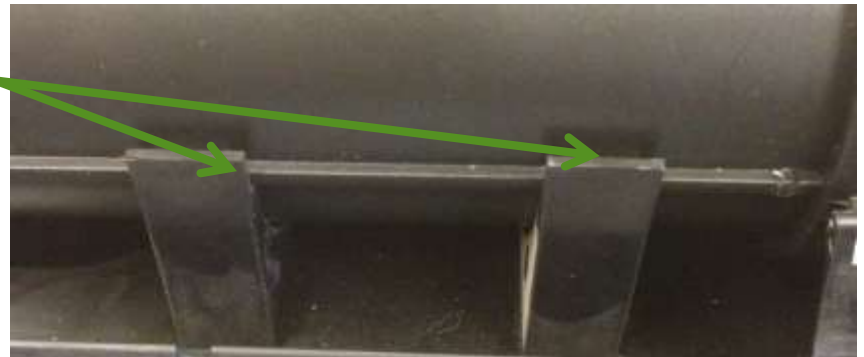


Accessing the UVC unit

The lid to the UVC area is a simple push clip which once removed will reveal a protective sleeve within which the quartz sleeve and bulb are housed.



There are further clips holding this cylinder shaped piece in place, these can also be moved to allow access to the UVC compartment.



Accessing the UV bulb

Once the large cylinder housing is removed you will need to unscrew the cap as shown.

The black plastic cap to the end of the bulb allows the to remain safe and secure within the quartz sleeve.

Remove the cap slowly and gently; there is a UV bulb attached and this is contained within the glass quartz sleeve. and the cap lid is attached to the UV bulb as shown.



Accessing the quartz sleeve

If at anytime you need to access the quartz sleeve you will need to firstly, follow the instructions from the two previous slides.

As highlighted below you will need to twist the main body section and pull away from the main unit.

